



JACKPINE PADDLE LOWER HORTON RIVER



EXPLORING CANADA'S ARCTIC BY CANOE

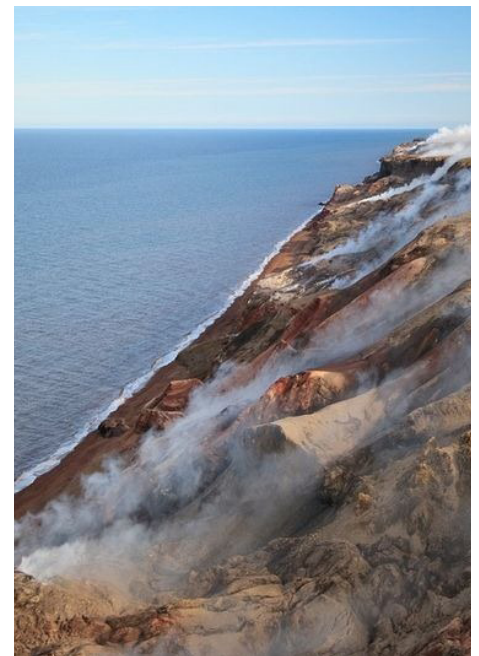


The Northwest Territories has never been tamed. Larger than all but a handful of sovereign nations, it's where Canada's legendary Thelon River flows, it's banks patrolled by caribou and muskoxen. And where people trace timeless paths, following lifeways richer than the modern world can know.

Your Northern Adventure Experts

Join us for a true wilderness adventure in a limitless land. We offer trips that suit all tastes and abilities, from relaxed to high octane. From the rugged Barrenlands to the Mackenzie Mountains, or watery depths of Great Slave Lake, we have an adventure for you. Our well-organized expeditions are backed by an exceptional safety record. As the largest Northern-owned paddling outfitter, we know the North like no one else.

ACCESS POINT
INUVIK, NWT



LIFE IS BETTER
OUTSIDE

info@jackpinepaddle.com
1-867-445-4512

www.jackpinEpaddle.com

MOST NORTHERLY RIVER ON MAINLAND

Horton River Wilderness Canoe Expedition

13 days - 12 nights, Novice to Intermediate Paddlers

The lower Horton River is a canoe trip on the sparsely treed tundra, sprawling to infinity. Lake trout, arctic grayling and arctic char dart around in swirling clear eddies of tributary streams. We'll scan the shore for rare birds and beasts(caribou, Arctic wolves, grizzly bears and muskoxen). Look around and the tundra is filled with delicate flowers such as Labrador Tea, Alpine Phlox, Paintbrush and Mountain Aven. Unique fossils can be found in many of the rocks near our campsites. Three limestone canyons offer thrilling sections of technical rapids and spectacular rock formations including towers, arches and steep cliffs. Peregrine and Gyrfalcons will often launch from their nests on the cliffs of these canyons as we paddle by. As our 300km trip progresses, we'll exit the canyons and enter immense serpentine oxbows as the river winds through an open plain. With trees left behind us for good, we paddle through the Horton Badlands and Smoking Hills area. There are dramatic colours in the hills which we'll explore during intriguing hikes. The area contains large deposits of sulphur-rich lignite (brown coal) which ignite spontaneously when exposed to the air. The area is believed to have been burning for centuries (and will for centuries more). From our last camp, we'll have a chance to hike to the Arctic coast and take a cold dip in the Arctic Ocean.



WHAT IS INCLUDED?

Charter flights to and from the river; airport pick-up in Inuvik; guides; canoes, paddles, spray-decks and safety equipment; lifejackets; all quality camping equipment, tents and gear including personal gear pack if required; expedition food; 2 nights' accommodations in Inuvik.

WHAT IS NOT INCLUDED?

Meals in Inuvik; commercial flights to Inuvik via Whitehorse or Yellowknife; trip cancellation, evacuation and medical insurance; personal gear and clothing; sleeping bag and sleeping pad; guide gratuities.

SPECTACULAR
NORTHWEST
TERRITORIES

LIFE IS BETTER
OUTSIDE

info@jackpinepaddle.com
1-867-445-4512

www.jackpinepaddle.com